

# Jaws DURO-M

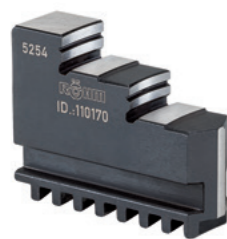
A09  
Inside jaw BB, DIN 6350, outward stepped jaw, hardened



Chuck Size	2-jaw set	3-jaw set	4-jaw set	6-jaw set	Jaw length mm	Jaw height mm	Jaw width mm
74	-	110154	-	-	32	23	10
80	-	110155	110063	-	37	26	12
100	-	110156	110064	-	48	33,5	14
125	-	110157	110065	-	52	41,5	18
140	-	110158	110066	-	61	41,5	18
160	-	110159	110067	150633	61	47,5	18
200	-	110160	110068	150634	69	53,5	20
250	-	110161	110069	150635	90	67,5	24
315	-	110162	110070	150636	130	79,5	34
350/400	-	110163	110071	150637	130	79,5	34
500/630	-	110164	110072	-	190	95	42

Additionally or later applied, hardened stepped jaws must be ground out in the chuck.  
For jaws which are applied later, send in the chuck.  
1) Reversible, can be used as outside and inside jaws.

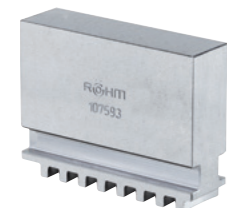
A09  
Outside jaw DB, DIN 6350, inward stepped jaw, hardened



Chuck Size	2-jaw set	3-jaw set	4-jaw set	6-jaw set	Jaw length mm	Jaw height mm	Jaw width mm
80	-	110165	110073	-	37	26	12
100	-	110166	110074	-	48	33,5	14
125	-	110167	110075	-	52	41,5	18
140	-	110168	110076	-	61	41,5	18
160	-	110169	110077	150640	61	47,5	18
200	-	110170	110078	150641	69	53,5	20
250	-	110171	110079	150642	90	67,5	24
315	-	110016	110080	150643	130	79,5	34
350/400	-	110017	110081	150644	130	79,5	34
500/630	-	110018	110082	-	190	95	42

Additionally or later applied, hardened stepped jaws must be ground out in the chuck.  
For jaws which are applied later, send in the chuck.

A09  
Unstepped jaw BL, DIN 6350, unstepped, soft, material 16MnCr5

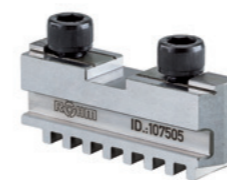


Chuck Size	2-jaw set	3-jaw set	4-jaw set	6-jaw set	Jaw length mm	Jaw height mm	Jaw width mm
74	-	109114	149304	-	32	23	10
80	-	107588	107598	-	37	26	12
100	-	107589	107599	-	48	33,5	14
125	-	107590	107600	-	52	41,5	18
140	-	107591	107601	-	61	41,5	18
160	-	107592	107602	150647	61	47,5	18
200	-	107593	107603	147218	69	53,5	20
250	-	107594	107604	147181	90	67,5	24
315	-	107595	107605	147361	130	79,5	34
350/400	-	107596	107644	151398	130	79,5	34
500/630	-	107597	107645	-	190	95	42

1) Reversible, can be used as outside DB and inside BB jaws.

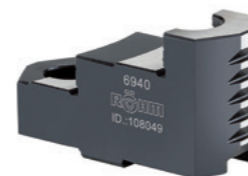
# Jaws DURO-M

A09  
Base jaw GB, DIN 6350, with fixing screw



Chuck Size	2-jaw set	3-jaw set	4-jaw set	6-jaw set	Jaw length mm	Jaw width mm
100	108950	107500	107542	-	46	14
125	108951	107501	107543	-	55	18
140	108952	107502	107544	-	65	18
160	108953	107503	107545	150650	65	18
200	108954	107504	107546	150651	78	20
250	108955	107505	107547	150652	92	24
315	108956	107506	107548	150653	108	34
350/400	108957	107507	107549	150654	127	34
500	-	107508	107550	-	165	42
630	-	107509	107551	-	203	42
800	-	105272	141616	-	291	55
1000	-	105274	141611	-	329	55
1250	-	105275	141614	-	367	55

A09  
Reversible top jaws UB, DIN 6350, hardened tongue and groove for external and internal clamping, material 16 MnCr5



Chuck Size	2-jaw set	3-jaw set	4-jaw set	6-jaw set	Jaw length mm	Jaw height mm	Jaw width mm
100	-	108045	108053	-	47	29,5	22
125	-	108046	108054	-	56	37,5	26
140/160	-	107936	107938	163832	66,7	41,5	28
200	-	107937	107939	186330	79,5	42,5	30
250	-	108049	108057	153324	95,3	52,5	36
315	-	108050	108058	148771	109,5	57,5	42
350/400	-	108051	108059	153319	127	64,5	42
500/630	-	108052	108060	-	127	79,5	50
800	-	105081	105085	-	210	89	68
1000/1250	-	105098	105101	-	210	110	68

Additionally or later applied hardened jaws must be ground out in the chuck. For jaws which are applied later, send in the chuck.

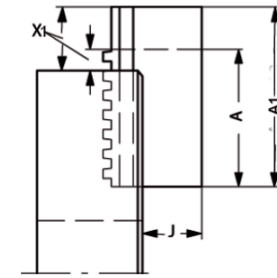
A09  
Unstepped top jaw AB, DIN 6350, soft, material 16MnCr5



Chuck Size	2-jaw set	3-jaw set	4-jaw set	6-jaw set	Jaw length mm	Jaw height mm	Jaw width mm
100	109497	107633	107641	-	53	30	22,5
125	109498	107634	107642	-	62	38	26,5
140/160	109499	108581	108583	186331	74	42	28,5
200	109501	108582	108584	10015381	87	43	30,5
250	109502	107637	107579	186332	103	53	36,5
315	109503	107638	107580	10013705	120	58	42,5
350	-	107639	107581	-	137	65	42,5
400	109504	107639	107581	186333	137	65	42,5
500/630	-	107640	107582	-	140	80	50,5
800	-	105103	105105	-	210	89	68
1000/1250	-	105107	105109	-	210	110	68

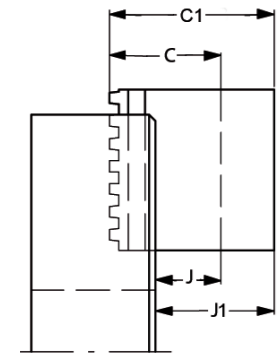
# Jaws DURO-M

A09  
Unstepped jaw BL, special length, soft, material 16MnCr5, DIN 6350



Chuck Size	3-jaw set	4-jaw set	A1 mm	X1 max. mm	A mm	J mm	X max. mm
200	130031	137073	100	50	69	32,5	19
250	132658	137074	120	56	90	41	26
315	132184	129894	160	70	130	46	40
350/400	137075	130442	160	70	130	42	40
500/630	131540	137079	220	80	190	55	50
200	130033	137077	120	70	69	32,5	19
250	128880	130610	140	76	90	41	26
315	118908	137078	200	110	130	46	40
350/400	137079	137080	200	110	130	42	40
500/630	137081	137082	280	140	190	55	50
315	121367	133691	250	160	130	46	40
350/400	137087	137088	250	160	130	42	40

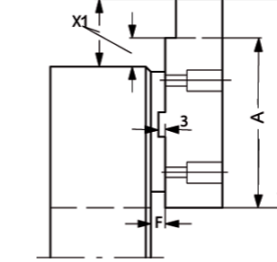
A09  
Unstepped jaw BL, special height, soft, material 16MnCr5, DIN 6350



Chuck Size	3-jaw set	4-jaw set	C1 mm	J1 mm	C mm	J mm
200	125710	132972	80	58,5	54	32,5
250	122188	134796	100	73	68	41
315	132186	137091	110	76	80	46
350/400	137092	131655	110	72	80	42
500/630	137093	137094	150	110	95	55
200	125712	137095	120	98,5	54	32,5
250	122189	130630	130	103	68	41
315	137096	137097	140	106	80	46
350/400	137098	137099	140	102	80	42
500/630	125117	137100	200	160	95	55
200	125714	137101	150	128,5	54	32,5
250	137102	137103	150	123	68	41
315	137104	130340	160	126	80	46
350/400	132879	110109	160	122	80	42

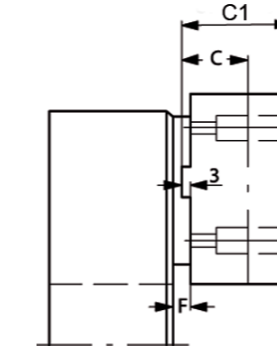
# Jaws DURO-M

A09  
Top jaw AB, special length, soft, material 16MnCr5, DIN 6350



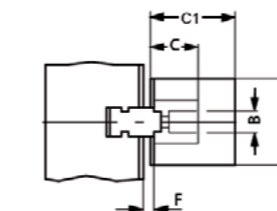
Chuck Size	3-jaw set	4-jaw set	A1 mm	X1 max. mm	F mm	A mm	X max. mm
200	110086	148139	100	43	6,8	87	30
250	112122	129289	130	63	8	103	36
315	110624	143764	160	76	5,5	120	36
350/400	110626	141277	160	53	8,5	137	30
500/630	103014	103393	170	75	8,5	140	45
200	112120	148657	120	63	6,8	87	30
250	125428	128700	150	83	8	103	36
315	112091	147754	200	116	5,5	120	36
350/400	112118	141263	200	93	8,5	137	30
500/630	110632	148234	220	125	8,5	140	45
250	104710	146013	180	113	8	103	36
315	112089	147860	250	166	5,5	120	36
350/400	103654	149974	260	153	8,5	137	30
500/630	112127	148235	280	185	8,5	140	45

A09  
Top jaw AB, special height, soft, material 16MnCr5, DIN 6350



Chuck Size	3-jaw set	4-jaw set	C1 mm	C mm	F mm
200	132155	132181	60	43	6,8
250	119645	135867	70	53	8
315	110435	149975	80	58	5,5
350/400	126385	118373	90	65	8,5
500/630	128590	149985	100	80	8,5
200	128564	149976	80	43	6,8
250	128571	134999	100	53	8
315	110437	129691	110	58	5,5
350/400	110628	135426	120	65	8,5
500/630	110630	149977	130	80	8,5
250	128573	149978	150	53	8
315	128569	141671	150	58	5,5
350/400	128567	139591	160	65	8,5
500/630	128588	140427	160	80	8,5

A09  
Top jaw AB, special width and height, soft, material 16MnCr5, DIN 6350



Chuck Size	3-jaw set	4-jaw set	B1 mm	C1 mm	B mm	C mm
200	105057	105061	40	70	30,5	43
250	137090	141338	50	80	36,5	53
315	143063	149979	60	90	42	58
350/400	131567	149980	60	90	42,5	65
500/630	137064	149981	80	110	50,5	80
200	133259	149982	50	80	30,5	43
250	133653	137526	60	90	36,5	53
315	143057	149983	80	110	42	58
350/400	137086	149984	80	110	42,5	65